

Gilbert – Ash
Project Newsletter – April 2024



- Since our previous newsletter in November 2023, we are delighted to report on the progress made during the concrete frame which has now been recently completed and façade installations commenced.
- Please refer to the Project Website for any further information - <https://park-street.co.uk/>
- On the 9th April 2024 for the fourth time in succession we received Excellent scores 45/45 from the Considerate Constructors Scheme.
- Furthermore, the Park Street site is a winner at the National Site Award 2024. The level of the award is to be announced 29th April 2024.
- We also have regular visits from Cambridge City Council's own Considerate Contractors Scheme.

Progress Update

We are pleased to report that the concrete frame has been recently completed for the Aparthotel. The focus is now the basement car park fit out which has been progressing from early this year involving the various services infrastructure including drainage pipework, mist suppression systems, electrical containment, and mechanical ventilation. Externally, superstructure items will now progress including access scaffold to the outer perimeter allowing the installation of the external façade infills, windows, brickwork, and roof areas. Internally, will see commencement of the guestroom partition walls.

We are focusing on a sectional completion of the car park (opening this summer) and our target is to complete the Park Street façade, pavements and remove scaffolding for this significant project milestone.

To the perimeter of the site there will be increased activity to facilitate the new approved drainage connections and service infrastructure on Round Church Street & Park Street requiring some traffic management installations for the works.

Regarding logistics and expected traffic this will be for the various materials and components for the external facade and internal fitout. We will continue to utilise Park Street and at times the bays located along Round Church Street. This as always, is controlled by our highly visible traffic marshal's.

@gilbertashnews

A fresh perspective on building

Gilbert – Ash
Project Newsletter – April 2024

The tower crane will remain in place for the next stages of construction and will be reconfigured from its current position within the car park basement onto the upper levels of the new courtyard area allowing the necessary works to be complete to the new car parking bays.

All environmental monitoring equipment situated on site remains live and is being recorded and is always monitored alongside Cambridge City Council.



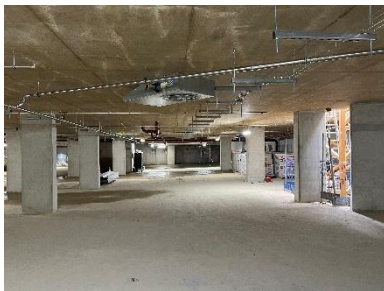
Facade Infills & Windows pre brickwork



Concrete Frame



Internal Courtyard



Car Park fitting out (ongoing)



Internal Guestroom

Upcoming Planned Works

Planned works in the coming months (April 2024 – August 2024)

- Basement Car Park:
 - Fit out of all levels and associated M&E services installation.
 - External works and hard landscaping to the car park entrance areas.
 - Car Park opening
- External envelope and façade:
 - SFS Infills & Windows.
 - Brickwork.
 - Roofing.

Overall Project Timeline





MARICK
PARK STREET - STAYCITY APARTHOTEL
CAMBRIDGE, CB5 8AS

Gilbert – Ash
Project Newsletter – April 2024

Health and Safety

Gilbert-Ash take the health and wellbeing of all those engaged with the project extremely seriously whether they are visitors, neighbours, supply chain members, operatives, managers, and members of the public. We are pleased to report that we have had zero incidents on site to date.

During the next stage which involves mainly façade and internal fit out works. We will be continuing to secure the relevant work areas to ensure they are safe in close proximity to members of public. Our traffic marshals and banksmen will have a continued presence on the roadways to direct our logistics and assist with coordination of other vehicles in the proximity of the site. Logistics will continue to be 'just in time' deliveries only.

We are mindful of our proximity to members of public, sensitive residential and business properties as well as the Primary School. We will be working with all to maintain a safe environment around the site area.

Community Liaison

Gilbert-Ash would like to take this opportunity to thank you, the residents and neighbours for your support and patience whilst the work is progressing. We will endeavour to minimise any disruptions to local businesses and residents during these works but in the interim if you wish to discuss anything regarding the project, please feel free to make contact as below:

Site Contact Details



Martin Douthart
Senior Site Manager

Martin.Douthart@gilbert-ash.co.uk

07736270890



Warren Copeland
Contracts Manager

Copeland@gilbert-ash.co.uk

07791413668

Our site accommodation and offices are located at 17 Park Street, please feel free to pop in to discuss the project with us.