

**Gilbert – Ash**  
**Project Newsletter – June 2023**

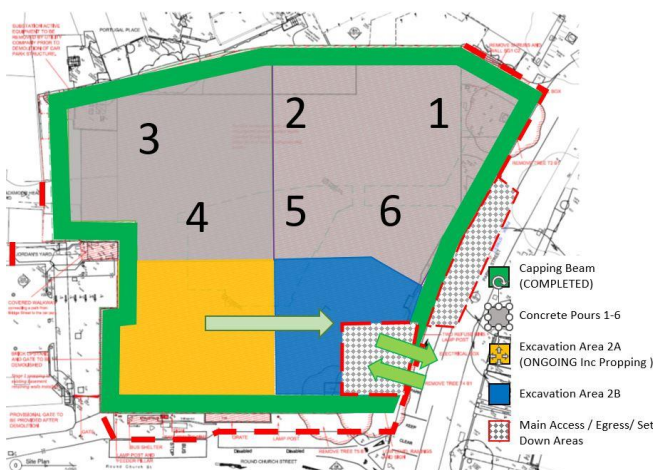


- Since our previous newsletter in February 2023, we are delighted to report on the progress made during the bulk excavation and propping stages.
- Please refer to the Project Website for any further information - <https://park-street.co.uk/>

**Progress Update**

We are pleased to report that in the period we have reach formation of the basement car park level 3. We are continuing to progress the bulk dig along Round Church Street, shown in yellow and blue. We will be placing the concrete slab to the basement over the next period shown in grey and progressively bringing the concrete frame structure back to street level. Our propping measures remain in place throughout the works and will be removed in stages once the concrete slab for the corresponding level is in place.

You will have noticed our tower crane which was successfully erected at the end of April and this now assists with our site wide logistics and getting the necessary materials to the key areas.



At this stage there will be increased traffic associated with continued muck away and concrete wagons as well as the delivery of materials & equipment. This is controlled by our traffic marshals who are highly visible.

Road sweeping will be present during vehicle movements along Park Street as the wagons leave the site area.

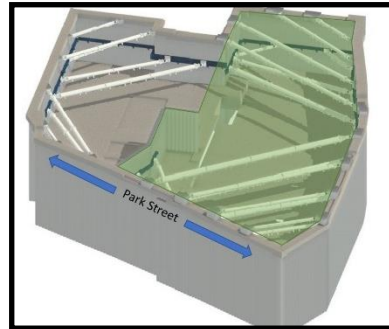
Minor amendments around the site will continue to ensure safe movement vehicles and plant equipment.

**Gilbert – Ash**  
**Project Newsletter – June 2023**

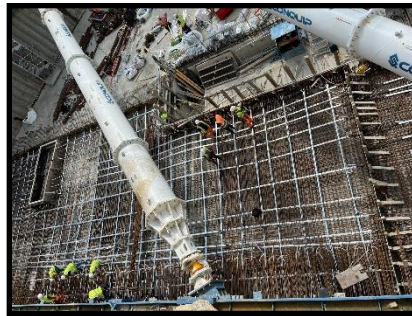
All environmental monitoring equipment situated on site remains live and is being monitored at all times.



**Tower Crane**



**Propping & Dig Completed**



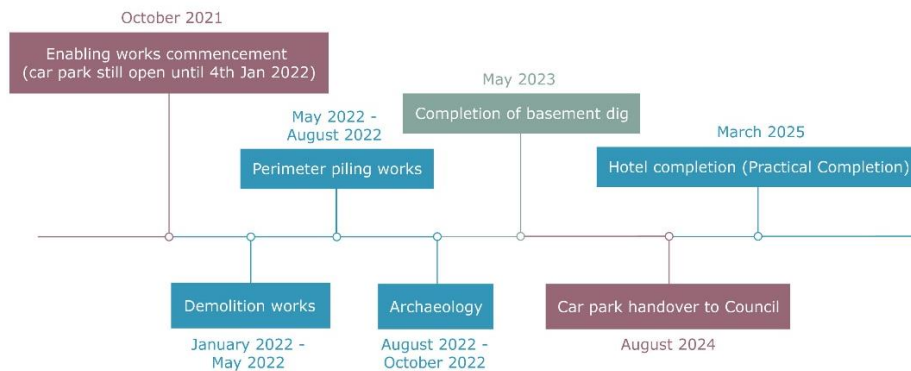
**Round Church St bulk excavations & basement slab preparations**

**Upcoming Planned Works**

Planned works in the coming months (June 2023 – September 2023)

- Continuation of the bulk excavation in conjunction with the propping measures.
- Formwork, tying of rebar and preparation work for placing concrete.
- Formation of basement level 3 car park slab.
- Commencement of vertical structures from the basement slab.

**Overall Project Timeline**



**Gilbert – Ash**  
**Project Newsletter – June 2023**

**Health and Safety**

Gilbert-Ash take the health and wellbeing of all those engaged with the project extremely seriously whether they are visitors, neighbours, supply chain members, operatives, managers, and members of the public. We are pleased to report that we have had zero incidents on site to date.

During the next stage which involves bulk excavation and concrete placement. We will be continuing to secure the relevant work areas to ensure they are safe in close proximity to members of public. Our traffic marshals and banksmen will have a continued presence on the roadways to direct our logistics and assist with coordination of other vehicles in the proximity of the site. Logistics will continue to be 'just in time' deliveries only.

We are mindful of our proximity to members of public, sensitive residential and business properties as well as the Primary School. We will be working with all to maintain a safe environment around the site area.

**Community Liaison**



Gilbert-Ash would like to take this opportunity to thank you, the residents and neighbours for your support and patience whilst the work is progressing. We will endeavour to minimise any disruptions to local businesses and residents during these works but in the interim if you wish to discuss anything regarding the project, please feel free to make contact as below:

**Site Contact Details**



**Martin Douthart**  
Senior Site Manager

[Martin.Douthart@gilbert-ash.co.uk](mailto:Martin.Douthart@gilbert-ash.co.uk)

07736270890



**Warren Copeland**  
Contracts Manager

[Copeland@gilbert-ash.co.uk](mailto:Copeland@gilbert-ash.co.uk)

07791413668

Our site accommodation and offices are located at 17 Park Street, please feel free to pop in to discuss the project with us.

@gilbertashnews

A fresh perspective on building